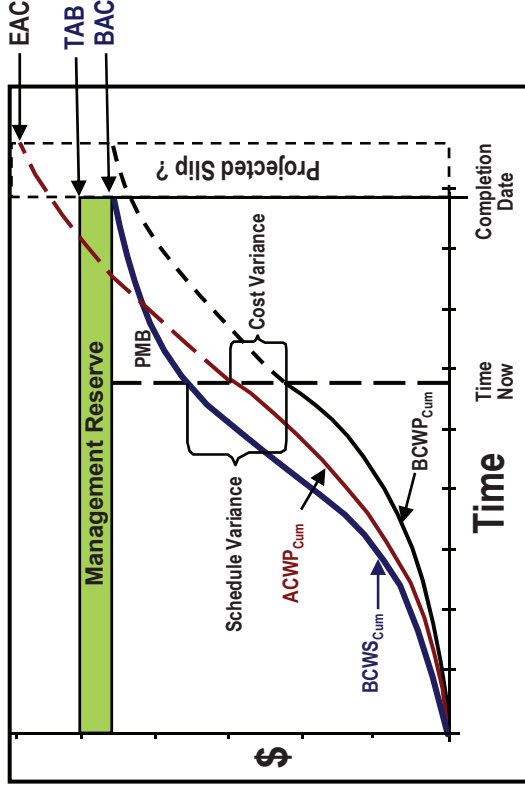


# DAU EARNED VALUE MANAGEMENT 'GOLD CARD'



**VARIANCES** Positive is Favorable, Negative is Unfavorable

**Cost Variance**  $CV = BCWP - ACWP$   $\% \text{ Schedule} = (BCWS_{CUM} / BAC) * 100$   
 $CV \% = (CV / BCWP) * 100$   $\% \text{ Complete} = (BCWP_{CUM} / BAC) * 100$   
**Schedule Variance**  $SV = BCWP - BCWS$   $\% \text{ Spent} = (ACWP_{CUM} / BAC) * 100$   
 $SV \% = (SV / BCWS) * 100$   
**Variance at Completion**  $VAC = BAC - EAC$   
 $VAC \% = (VAC / BAC) * 100$

## EFFICIENCIES

**Cost Efficiency**  $CPI = BCWP / ACWP$  Favorable is  $> 1.0$ , Unfavorable is  $< 1.0$   
**Schedule Efficiency**  $SPI = BCWP / BCWS$  Favorable is  $> 1.0$ , Unfavorable is  $< 1.0$

## SCHEDULE METRICS (Selected)

**BEI** = Total Tasks Completed / (Total Tasks with Baseline Finish On or Prior to Current Report Period + Tasks without baseline finish dates)

**Hit Task %** =  $100 * (\text{Tasks in Denominator that Completed ON or Before Baseline Finish} / \text{Tasks Baselined to Finish within Current Report Period})$

**ESTIMATE @ COMPLETION** = ACTUALS TO DATE + [(REMAINING WORK) / (PERFORMANCE FACTOR)]

$EAC_{CPI} = ACWP_{CUM} + [(BAC - BCWP_{CUM}) / CPI_{CUM}]$

$EAC_{Composite} = ACWP_{CUM} + [(BAC - BCWP_{CUM}) / (CPI_{CUM} * SPI_{CUM})]$

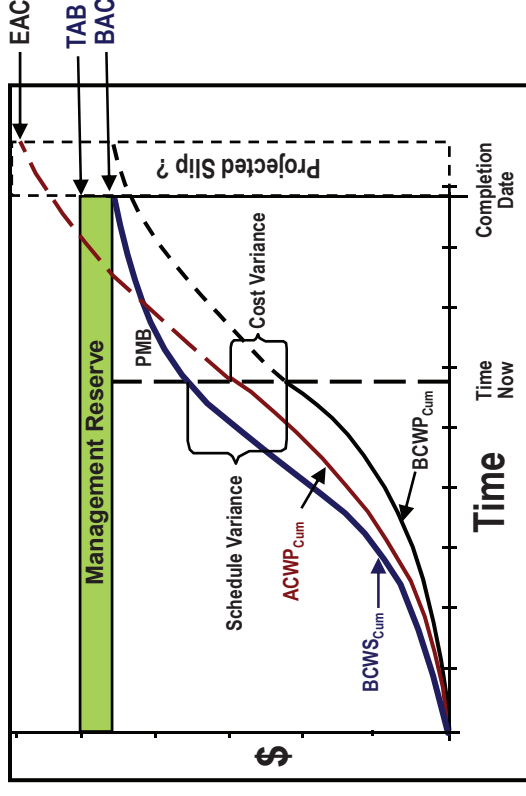
**TO COMPLETE PERFORMANCE INDEX (TCPI) \$ #**

$TCPI_{Target} = \text{Work Remaining} / \text{Cost Remaining} = (BAC - BCWP_{CUM}) / (Target - ACWP_{CUM})$

\$ To Determine the TCPI for BAC, LRE, or EAC Substitute TARGET with BAC, LRE, or EAC

# To Determine the Contract Level TCPI for EAC, You May Replace BAC with TAB

# DAU EARNED VALUE MANAGEMENT 'GOLD CARD'



**VARIANCES** Positive is Favorable, Negative is Unfavorable

**Cost Variance**  $CV = BCWP - ACWP$   $\% \text{ Schedule} = (BCWS_{CUM} / BAC) * 100$   
 $CV \% = (CV / BCWP) * 100$   $\% \text{ Complete} = (BCWP_{CUM} / BAC) * 100$   
**Schedule Variance**  $SV = BCWP - BCWS$   $\% \text{ Spent} = (ACWP_{CUM} / BAC) * 100$   
 $SV \% = (SV / BCWS) * 100$   
**Variance at Completion**  $VAC = BAC - EAC$   
 $VAC \% = (VAC / BAC) * 100$

## EFFICIENCIES

**Cost Efficiency**  $CPI = BCWP / ACWP$  Favorable is  $> 1.0$ , Unfavorable is  $< 1.0$   
**Schedule Efficiency**  $SPI = BCWP / BCWS$  Favorable is  $> 1.0$ , Unfavorable is  $< 1.0$

## SCHEDULE METRICS (Selected)

**BEI** = Total Tasks Completed / (Total Tasks with Baseline Finish On or Prior to Current Report Period + Tasks without baseline finish dates)

**Hit Task %** =  $100 * (\text{Tasks in Denominator that Completed ON or Before Baseline Finish} / \text{Tasks Baselined to Finish within Current Report Period})$

**ESTIMATE @ COMPLETION** = ACTUALS TO DATE + [(REMAINING WORK) / (PERFORMANCE FACTOR)]

$EAC_{CPI} = ACWP_{CUM} + [(BAC - BCWP_{CUM}) / CPI_{CUM}]$

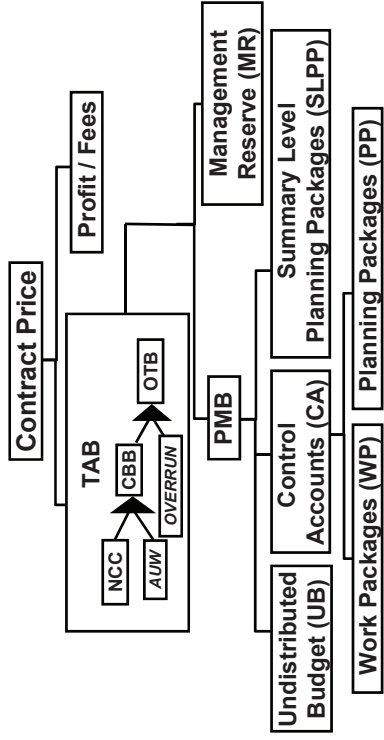
$EAC_{Composite} = ACWP_{CUM} + [(BAC - BCWP_{CUM}) / (CPI_{CUM} * SPI_{CUM})]$

**TO COMPLETE PERFORMANCE INDEX (TCPI) \$ #**

$TCPI_{Target} = \text{Work Remaining} / \text{Cost Remaining} = (BAC - BCWP_{CUM}) / (Target - ACWP_{CUM})$

\$ To Determine the TCPI for BAC, LRE, or EAC Substitute TARGET with BAC, LRE, or EAC

# To Determine the Contract Level TCPI for EAC, You May Replace BAC with TAB



**ACRONYMS**

- ACWP Actual Cost of Work Performed Cost actually incurred in accomplishing work performed = ACTUAL COST
- AUW Authorized Unpriced Work Work contractually approved, but not yet negotiated / defined
- BAC Budget At Completion The sum of all budgets for the contract thru any given WBS/OBS level
- BCWP Budgeted Cost for Work Performed Value of completed work in terms of the work's assigned budget = EARNED VALUE
- BCWS Budgeted Cost for Work Scheduled Time-phased Budget Plan for work scheduled = PLANNED VALUE
- CA Control Account Lowest CWBS element assigned to a single focal point to plan & control scope / schedule / budget
- CBB Contract Budget Base Sum of NCC & AUW
- EAC Estimate At Completion Estimate of total Cost for the contract thru any given level generated by Ktr, PMO, DCMA, etc. =  $EAC_{Ktr/PMO/DCMA}$
- ETC Estimate to Complete Estimate of the cost of remaining work
- LRE Latest Revised Estimate Ktr's EAC or  $EAC_{Ktr}$
- MR Management Reserve Budget withheld by Ktr PM for unknowns / risk management
- NCC Negotiated Contract Cost Contract Price Minus profit or fee(s)
- OTB Over Target Baseline Sum of CBB + additional budget approved for remaining work
- PAC Price At Completion EAC Plus Adjusted Profit or Fee(s)
- PMB Performance Measurement Baseline Contract time-phased budget plan
- PP Planning Package Far-term CA activities not yet defined into WPs
- SLPP Summary Level Planning Package Far-term contract activities not yet assigned to a CA
- TAB Total Allocated Budget Sum of all budgets for work on contract = NCC, CBB, or OTB
- TCPI To Complete Performance Index Efficiency needed from 'time now' to achieve a Cost Target = BAC, LRE, or EAC
- UB Undistributed Budget Broadly defined activities not yet time-phased for distribution to CAs or SLPPs
- WP Work Package Near-term, detail-planned activities within a CA

**EVM POLICY:**

EVMS in accordance with EIA-748 is required for cost or incentive contracts, subcontracts, intra-government work agreements, & other agreements valued > \$20M (TY \$).  
 Refer to the IPMDAR Implementation Guide for IPMDAR Tailoring Guidance.

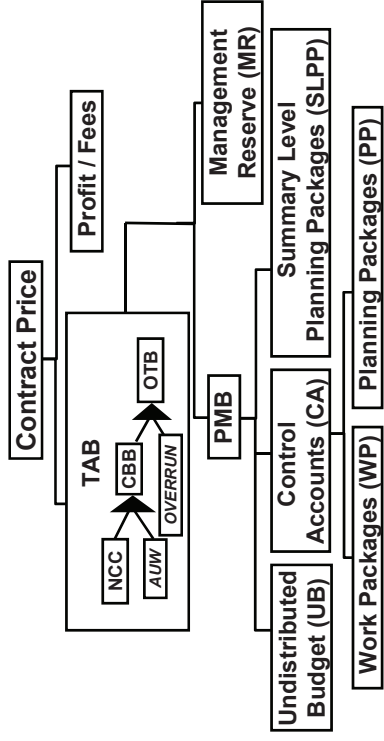
**DoD's EVM CONTRACTING REQUIREMENTS:**

- DFARS CLAUSES 252.234-7001 "NOTICE OF EVMS" FOR SOLICITATIONS
- 252.234-7002 "EVMS" FOR SOLICITATIONS & CONTRACTS
- 252.242-7005 "CONTRACTOR BUSINESS SYSTEMS" FOR SOLICITATIONS & CONTRACTS

Integrated Program Mngt Data adn Analysis Report DI-MGMT-81861

INTEGRATED BASELINE REVIEW MANDATORY FOR ALL EVMS CONTRACTS

EVM CoP: <https://www.dau.edu/cop/evm> | Contact: [EVM.dau@dau.edu](mailto:EVM.dau@dau.edu) | Revised Jun 2020



**ACRONYMS**

- ACWP Actual Cost of Work Performed Cost actually incurred in accomplishing work performed = ACTUAL COST
- AUW Authorized Unpriced Work Work contractually approved, but not yet negotiated / defined
- BAC Budget At Completion The sum of all budgets for the contract thru any given WBS/OBS level
- BCWP Budgeted Cost for Work Performed Value of completed work in terms of the work's assigned budget = EARNED VALUE
- BCWS Budgeted Cost for Work Scheduled Time-phased Budget Plan for work scheduled = PLANNED VALUE
- CA Control Account Lowest CWBS element assigned to a single focal point to plan & control scope / schedule / budget
- CBB Contract Budget Base Sum of NCC & AUW
- EAC Estimate At Completion Estimate of total Cost for the contract thru any given level generated by Ktr, PMO, DCMA, etc. =  $EAC_{Ktr/PMO/DCMA}$
- ETC Estimate to Complete Estimate of the cost of remaining work
- LRE Latest Revised Estimate Ktr's EAC or  $EAC_{Ktr}$
- MR Management Reserve Budget withheld by Ktr PM for unknowns / risk management
- NCC Negotiated Contract Cost Contract Price Minus profit or fee(s)
- OTB Over Target Baseline Sum of CBB + additional budget approved for remaining work
- PAC Price At Completion EAC Plus Adjusted Profit or Fee(s)
- PMB Performance Measurement Baseline Contract time-phased budget plan
- PP Planning Package Far-term CA activities not yet defined into WPs
- SLPP Summary Level Planning Package Far-term contract activities not yet assigned to a CA
- TAB Total Allocated Budget Sum of all budgets for work on contract = NCC, CBB, or OTB
- TCPI To Complete Performance Index Efficiency needed from 'time now' to achieve a Cost Target = BAC, LRE, or EAC
- UB Undistributed Budget Broadly defined activities not yet time-phased for distribution to CAs or SLPPs
- WP Work Package Near-term, detail-planned activities within a CA

**EVM POLICY:**

EVMS in accordance with EIA-748 is required for cost or incentive contracts, subcontracts, intra-government work agreements, & other agreements valued > \$20M (TY \$).  
 Refer to the IPMDAR Implementation Guide for IPMDAR Tailoring Guidance.

**DoD's EVM CONTRACTING REQUIREMENTS:**

- DFARS CLAUSES 252.234-7001 "NOTICE OF EVMS" FOR SOLICITATIONS
- 252.234-7002 "EVMS" FOR SOLICITATIONS & CONTRACTS
- 252.242-7005 "CONTRACTOR BUSINESS SYSTEMS" FOR SOLICITATIONS & CONTRACTS

Integrated Program Mngt Data and Analysis Report DI-MGMT-81861

INTEGRATED BASELINE REVIEW MANDATORY FOR ALL EVMS CONTRACTS

EVM CoP: <https://www.dau.edu/cop/evm> | Contact: [EVM.dau@dau.edu](mailto:EVM.dau@dau.edu) | Revised Jun 2020